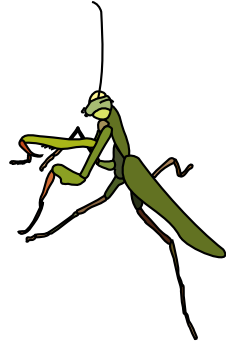
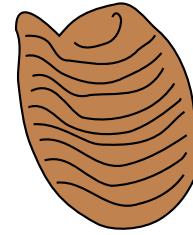


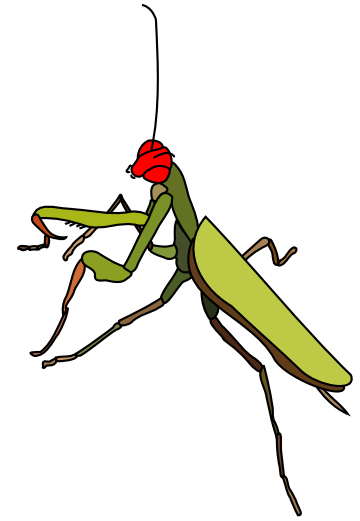
adult



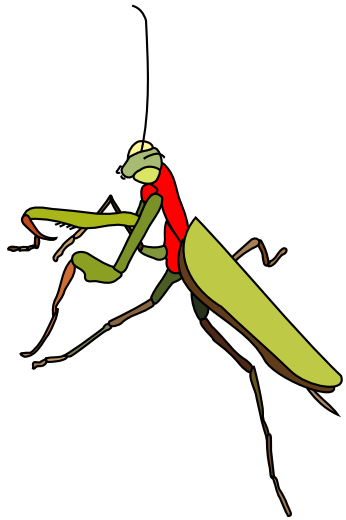
nymph



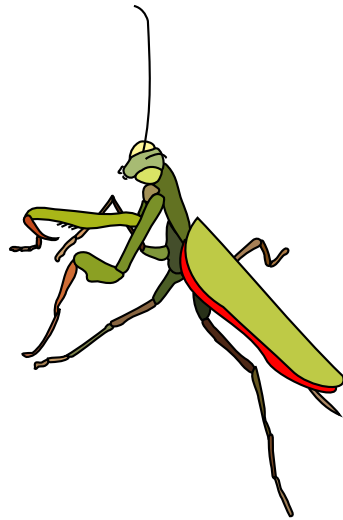
egg case



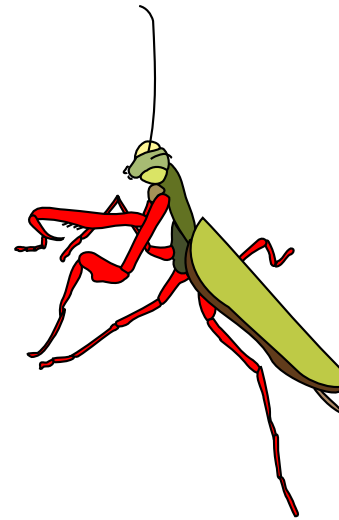
head



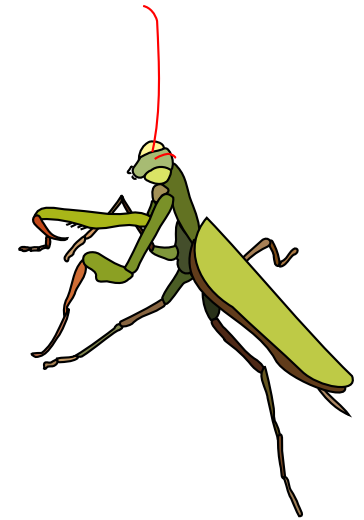
thorax



abdomen



legs



antenna

<p>An adult praying mantis is a large insect that hunts and eats other insects.</p>	<p>A nymph is a baby praying mantis. It is smaller than the adult and does not have wings.</p>	<p>An egg case is filled with eggs in the fall. The nymphs hatch from the egg case in the spring.</p>	<p>Like all insects, the praying mantis has six legs, a head, an abdomen and two antennae.</p>

<p>The praying mantis is closely related to these insects: walking stick, cricket, grasshopper and cockroach.</p>	<p>Praying mantises are helpful in our gardens and farms because they eat insects that eat our plants.</p>	<p>Some praying mantises hunt and eat mice and small birds.</p>	<p>Praying mantises hunt and attack so quickly that you cannot see them move.</p>